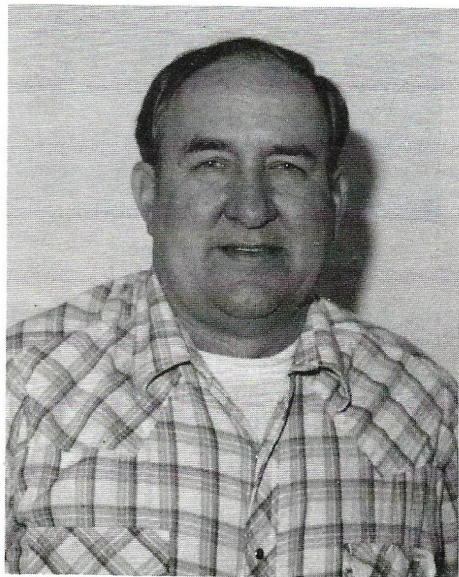


# MASTER MODEL RAILROADERS

by Tom Madden



Gerald V. Carson

## MASTER MODEL RAILROADER #108 GERALD V. CARSON

Gerry Carson of Woodland Park, Colo., is our 108th Master Model Railroader. An Army veteran with combat experience in Korea, Gerry and his family moved to Colorado in 1979 after spending five years in Koekuk, Iowa, and 15 years in St. Louis, Mo. Gerry now owns a wholesale and retail photo lab and previously owned camera stores in Iowa and Missouri. In addition to his photographic and model railroading activities, Gerry is a licensed pilot with over 5,000 hours of "pilot in command" time. He and his wife Deva have two married daughters, Janet and Julie.

A chance invitation to visit Watty House's layout in Connecticut in 1950 changed Gerry from a model airplane enthusiast into a model railroader. As a result of that visit, he bought a Mantua

Mikado kit and was firmly hooked.

In 1964, Gerry was one of the founders of the HO Gateway Western Model Railroad Club. The club had its layout in Gerry's home in St. Louis and was featured during the 1970 National NMRA Convention. In the mid-1970's, Gerry developed an interest in scratch-building, which prompted him to experiment with On3. By 1979 the experiment was over—he was a dyed-in-the-wool On3 modeler. Gerry's Carson & Cascade Railroad features On3 mining and O scale logging. The C&C permits Gerry to indulge his interests in rolling stock and motive power construction and trackwork.

In addition to his involvement with the Gateway Western Club in St. Louis, Gerry was Division Superintendent of the Pikes Peak Division of the Rocky Mountain Region from 1981 to 1983, served on the NMRA Promotion Committee from 1983 to 1985, and was a regional contest judge from 1981 to

1985. Gerry has won many first prize plaques in regional contests, and his photos have appeared in RAILFAN, TRAINS, RAILROAD MODEL CRAFTSMAN, and various historical society publications. He holds Achievement Certificates for Cars, Motive Power, Scenery, Civil and Electrical Engineer, Chief Dispatcher, and Association Volunteer.

Gerry feels we should be doing more to interest young people in model railroading, as that's where the new blood for the hobby will come. He would also like to see more participation in the Achievement Program by present NMRA members. As he puts it: "Don't be afraid to show your models. This is a good way to learn where you need to improve your modeling techniques. It's nice to win, but I remember when all I wanted was someone who would tell me what I needed to do to improve my modeling techniques to get the effect I was looking for. I hope it may be possible for me to pass along some of the things I've learned to others seeking to improve the quality of their modeling."